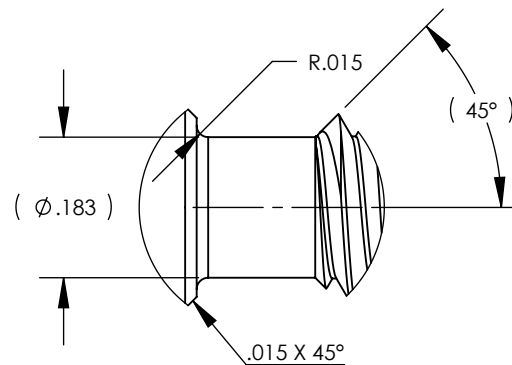
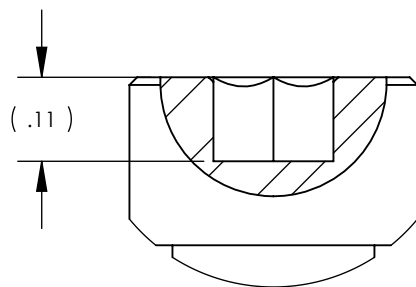
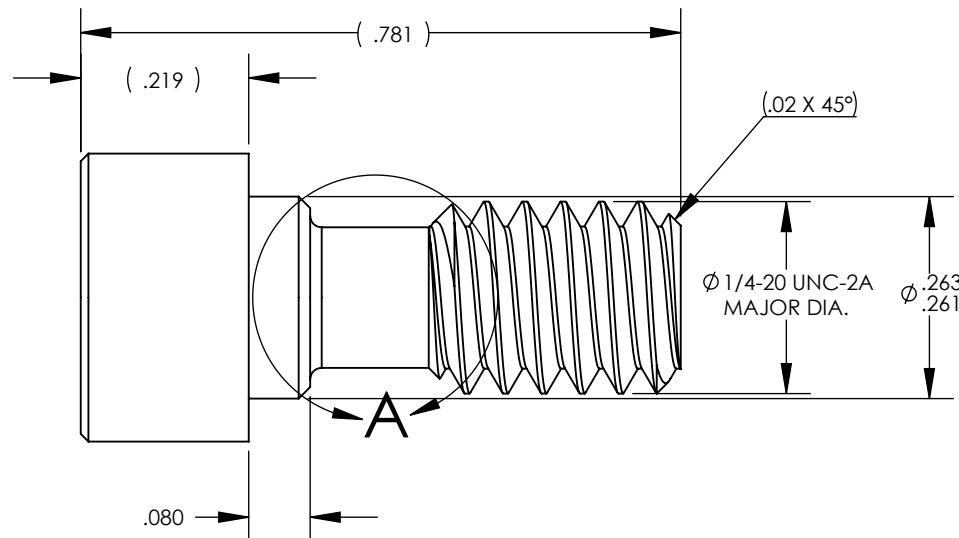
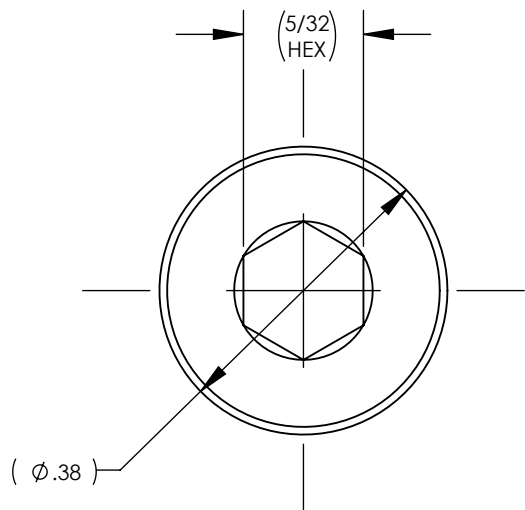


NOTES CONTINUED:

5. SCRIBE, ENGRAVE, LASER MARK OR MECHANICALLY STAMP (NO DYES OR INKS) A UNIQUE THREE DIGIT SERIAL NUMBER & REVISION NUMBER ON EACH PART. SERIAL NUMBERS START AT 001 FOR THE FIRST ARTICLE AND PROCEED CONSECUTIVELY. BAG AND TAG PARTS WITH THEIR DRAWING PART NUMBER, REVISION, VARIANT OR "TYPE" (IF APPLICABLE), AND QUANTITY. IF PARTS ARE TOO SMALL TO SCRIBE, BAGGING AND TAGGING ALONE IS SUFFICIENT.
 EXAMPLE (PART): 001-v1
 EXAMPLE (TAG): DXXXXXX-VY, TYPE-XX, QTY: TBD

6. MATERIAL: MAKE FROM McMASTER-CARR PART NO. 94035A191 OR EQ.

REV.	DATE	DCN #	DRAWING TREE #
v1	23 FEB 2017	-	-
v2	20 MAR 2017	E1700061-x0	-
-	-	-	-



DETAIL A

NOTES AND TOLERANCES: (UNLESS OTHERWISE SPECIFIED)

DIMENSIONS ARE IN INCHES

TOLERANCES:
 .XX ± .01
 .XXX ± .005

ANGULAR ± 0.5°

1. INTERPRET DRAWING PER ASME Y14.5-1994.
2. REMOVE ALL SHARP EDGES: .005-.015. FOR MACHINED PARTS. ROUND ALL EDGES APPROXIMATELY R.02 FOR SHEET METAL PARTS.
3. DO NOT SCALE FROM DRAWING.
4. (DELETED)

MATERIAL 18-8 SSTL 6 MATERIAL FINISH 63 μinch

LIGO CALIFORNIA INSTITUTE OF TECHNOLOGY
 MASSACHUSETTS INSTITUTE OF TECHNOLOGY

SYSTEM ADVANCED LIGO SUB-SYSTEM PSL
 NEXT ASSY D1600270

PART NAME aLIGO, PSL, PreMode Cleaner, 1/4-20 SHOULDER SCREW (TIGHT TOL)

DESIGNER	E.SANCHEZ	21 FEB 2017	SIZE	DWG. NO.	REV.
DRAFTER	E.SANCHEZ	23 FEB 2017	A	D1700102	v2
CHECKER	SEE DCC	SEE DCC	SCALE: 4:1	PROJECTION:	SHEET 1 OF 1
APPROVAL	SEE DCC	SEE DCC			