



EPI Plan & Schedule

Dennis Coyne

April 18, 2003

Recommended Plan?

Depends on Review Committee Recommendations,
Action Items & Questions

Unless the outcome of this review is a decision on HEPI or MEPI ...

- Commit to EPI
 - » Submit CCB package:
 - with costs for HEPI (with costs for fallback option to MEPI)
 - With costs for structural modifications (rough estimates; needs to be definitized more)
 - Including costs for ISCT isolation (based on TMS Stacis units, but analysis is required to confirm)
 - LHO Wind noise still un-addressed
 - » Set a date with the review committee & LIGO management to make a final decision ~4 weeks?
If unresolved, then default to HEPI (baseline)
 - Further simulation (HEPI on HAM, MEPI on BSC)
 - Respond to committee questions
 - If decision is delayed more than ? Weeks, then we slip day-for-day
- Start the procurement of all common elements
 - » Commercial off the shelf components (L4C, Kaman sensors, etc.)
 - » Custom components (EPI spring/actuator housing, machined helical spring, ...)
 - » Finalize dwg/bid packages & get quotes
- HEPI and MEPI unique components
 - » Finalize dwg/bid packages & get quotes → prepare for decision date

Recommended Plan

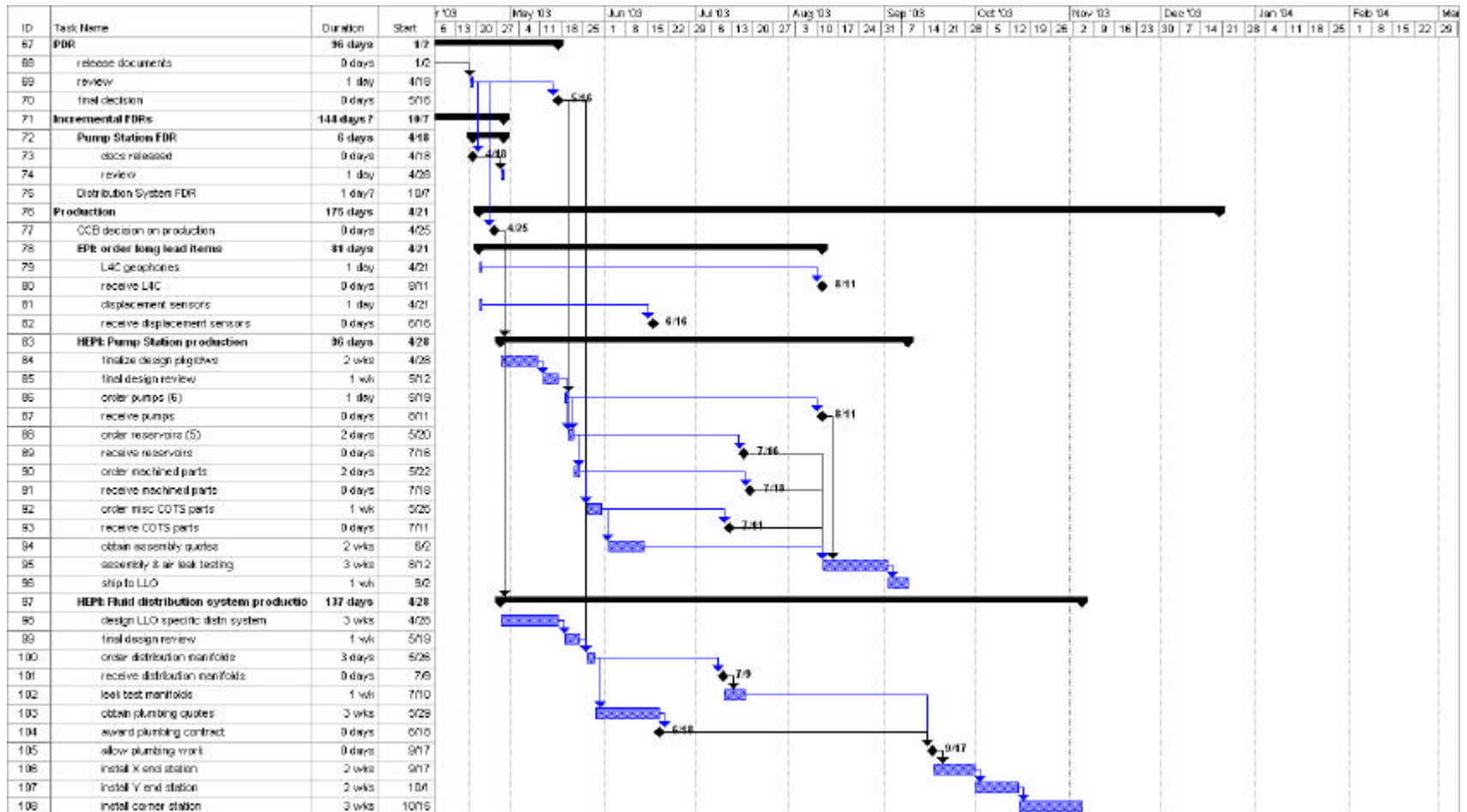
- Jonathan Kern leads all final design, fabrication and installation activities
 - » Design detailing, minor design modifications/improvements
 - » All assemblies & parts have final design/drawing reviews by the team
- Stefan Ballmer, Rich Abbott lead effort to migrate system from dSpace to VME at LASTI
- Brian Lantz, Rich Mittleman, et. al. continue EPI optimization, controls development
 - » Supervisory control
 - » Ideally try chosen system on both platforms before committing production, but this would require further delay
 - is this even necessary for HEPI/HAM?
 - Probably essential for MEPI/BSC

Schedule

Assuming no further delays:

- Part Procurement, Production & Assembly/Test
 - » starts ASAP for common elements
 - » Part procurement for unique parts starts in 4 weeks
 - » First assembled actuators 10/3
 - » Completed mid-Dec
- Installation
 - » Starts 10/3, completes end of Dec
- Commissioning
 - » Starts mid-Oct, ends early Feb, 2004

Schedule



Schedule

