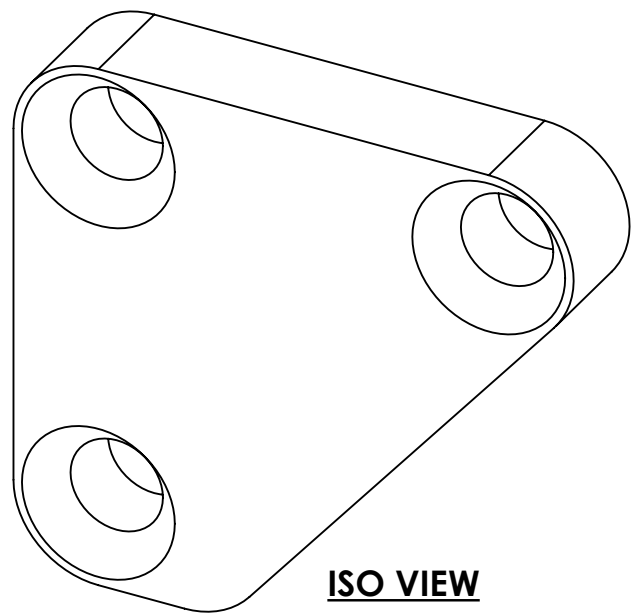
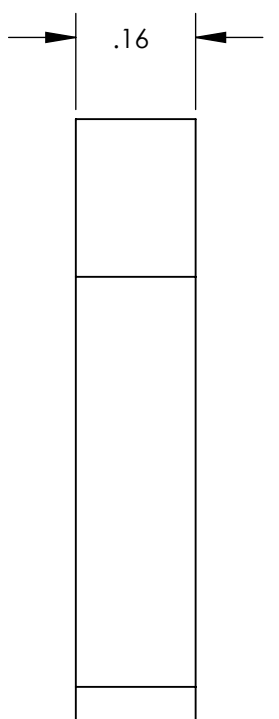
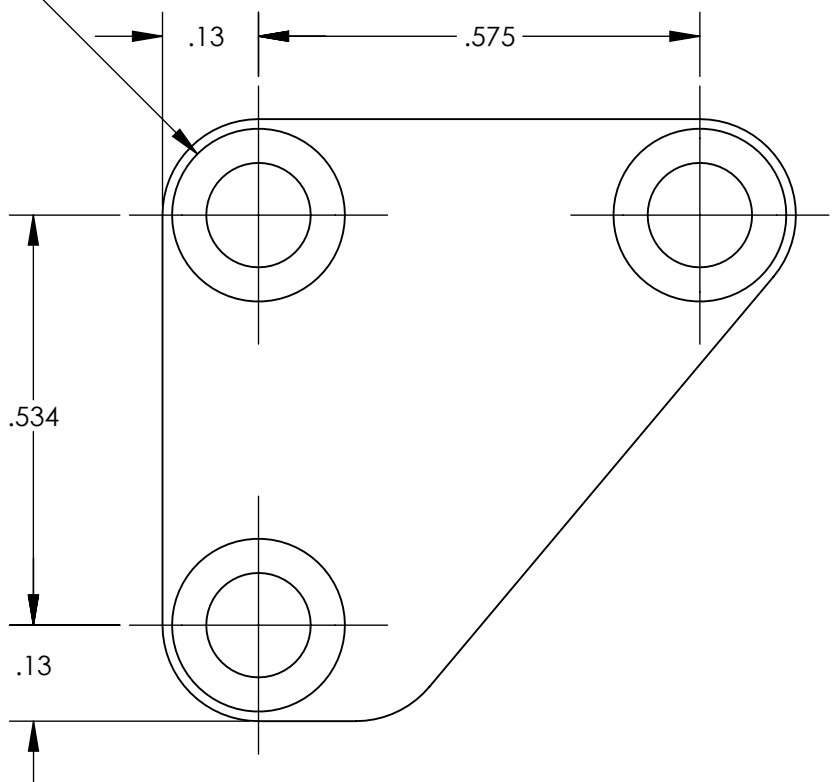
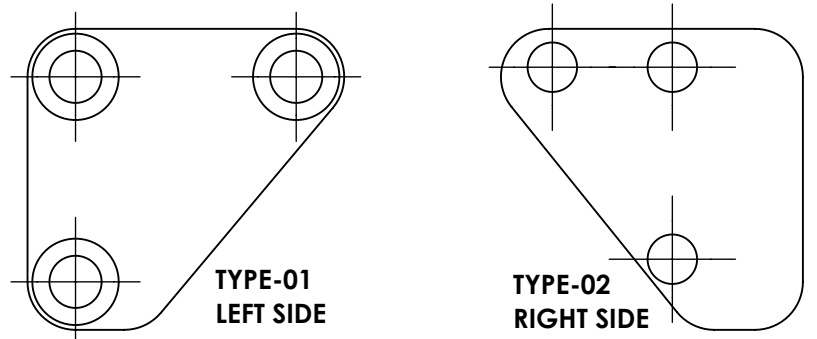


**NOTES CONTINUED:**  
 5. SCRIBE, ENGRAVE (A VIBRATORY TOOL MAY BE USED), LASER MARK OR MECHANICALLY STAMP (NO INKS OR DYES) DRAWING PART NUMBER, REVISION (AND VARIANT OR "TYPE" IF APPLICABLE) ON NOTED SURFACE OF PART FOLLOWED ON THE NEXT LINE WITH A THREE DIGIT SERIAL NUMBER. SERIAL NUMBERS START AT 001 FOR THE FIRST ARTICLE AND PROCEED CONSECUTIVELY. USE MINIMUM 0.12" HIGH CHARACTERS, UNLESS THE SIZE OF THE PART DICTATES SMALLER CHARACTERS. EXAMPLE: DXXXXXX-VY, TYPE-XX, S/N XXX

- D 6. MACHINE ALL SURFACES TO REMOVE OXIDES AND MILL FINISH. USE OF ABRASIVE REMOVAL TECHNIQUES IS NOT ALLOWED.  
 REFER TO LIGO SPECIFICATION E0900364
7. ALL PARTS SHALL BE MANUFACTURED IN ACCORDANCE WITH LIGO SPECIFICATION E0900364
8. ALL MATERIAL IS TO BE VIRGIN MATERIAL (i.e. NO WELD REPAIRS, PLUGS OR RECYCLED MATERIAL). NO REPAIRS SHALL BE MADE UNLESS APPROVED IN ADVANCE, AND IN WRITING, BY LIGO LABORATORY.  
 REFER TO LIGO SPECIFICATION E0900364

REV.	DATE	DCN #	DRAWING TREE #
v1	21 SEPT 2023	E2300320-x0	-
-	-	-	-
-	-	-	-

3X  $\phi$  .14 THRU ALL  
 $\surd$   $\phi$  .23 X 82°



NOTES AND TOLERANCES: (UNLESS OTHERWISE SPECIFIED)	
DIMENSIONS ARE IN	1. INTERPRET DRAWING PER ASME Y14.5-1994.
TOLERANCES:	2. REMOVE ALL SHARP EDGES, .005-.015, FOR MACHINED PARTS. ROUND ALL EDGES APPROXIMATELY R.02 FOR SHEET METAL PARTS.
.XX ±	3. DO NOT SCALE FROM DRAWING.
.XXX ±	4. ALL MACHINING FLUIDS MUST BE FULLY SYNTHETIC, FULLY WATER SOLUBLE AND FREE OF SULFUR, SILICONE, AND CHLORINE.
ANGULAR ± °	
MATERIAL	6061-T6 AL ALLOY
FINISH	μinch

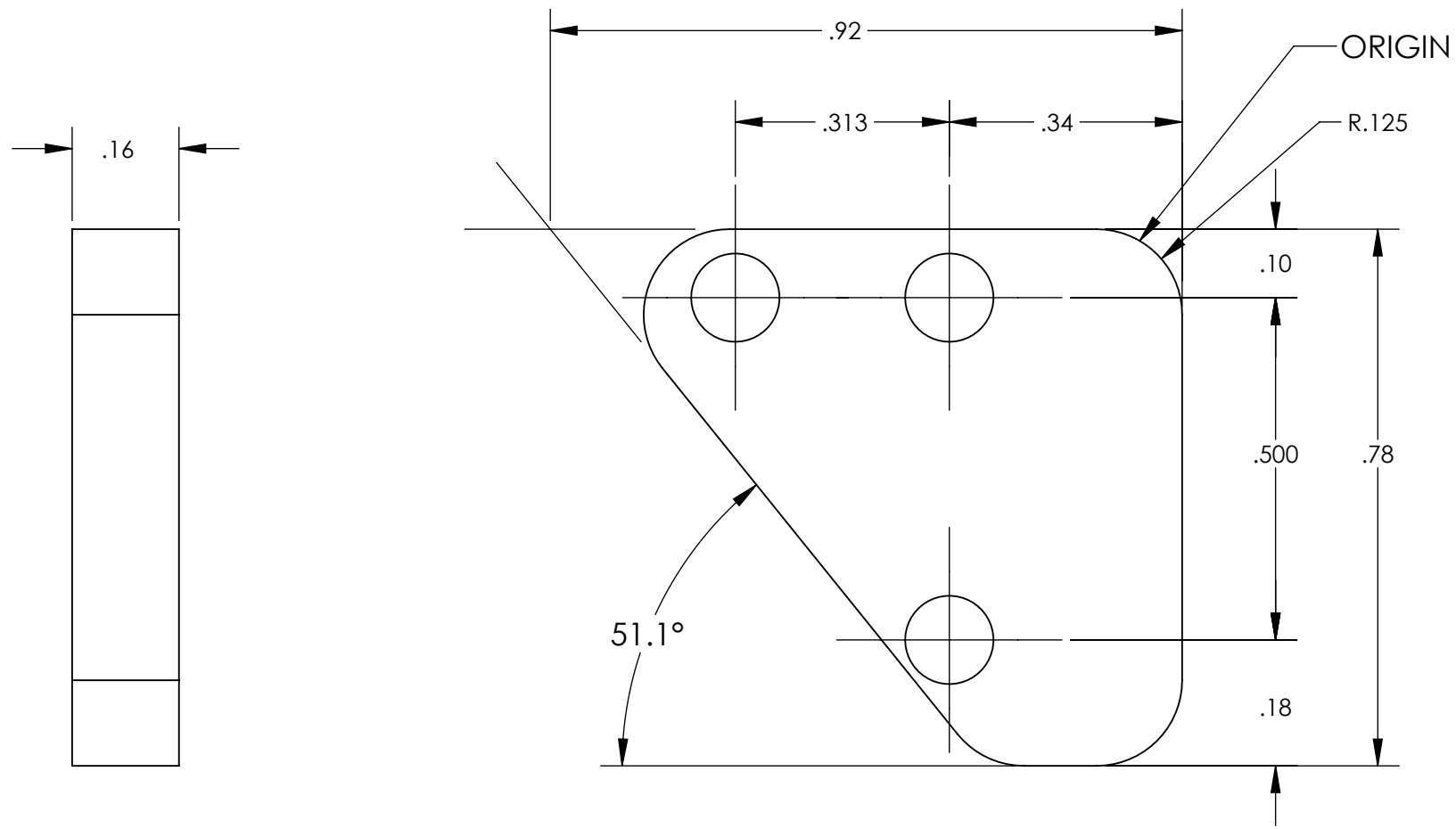
CALIFORNIA INSTITUTE OF TECHNOLOGY MASSACHUSETTS INSTITUTE OF TECHNOLOGY		PART NAME	
SYSTEM <b>ADVANCED LIGO</b>		SUB-SYSTEM PSL	
NEXT ASSY		DESIGNER	
		DRAFTER	
		CHECKER	
		APPROVAL	
		SIZE	DWG. NO.
		<b>B</b>	<b>D2300321</b>
		REV.	v1
		SCALE: 4:1	PROJECTION:
		SHEET 1 OF 2	

8 7 6 5 4 3 2 1

v1 21 SEPT 2023 E2300320-x0 -  
- - - -  
- - - -

D  
C  
B  
A

D  
C  
B  
A



**LIGO** CALIFORNIA INSTITUTE OF TECHNOLOGY  
MASSACHUSETTS INSTITUTE OF TECHNOLOGY

SIZE	DWG. NO.	REV.
B	D2300321	v1
SCALE: 4:1		PROJECTION:
		SHEET 2 OF 2

8 7 6 5 4 3 2 1