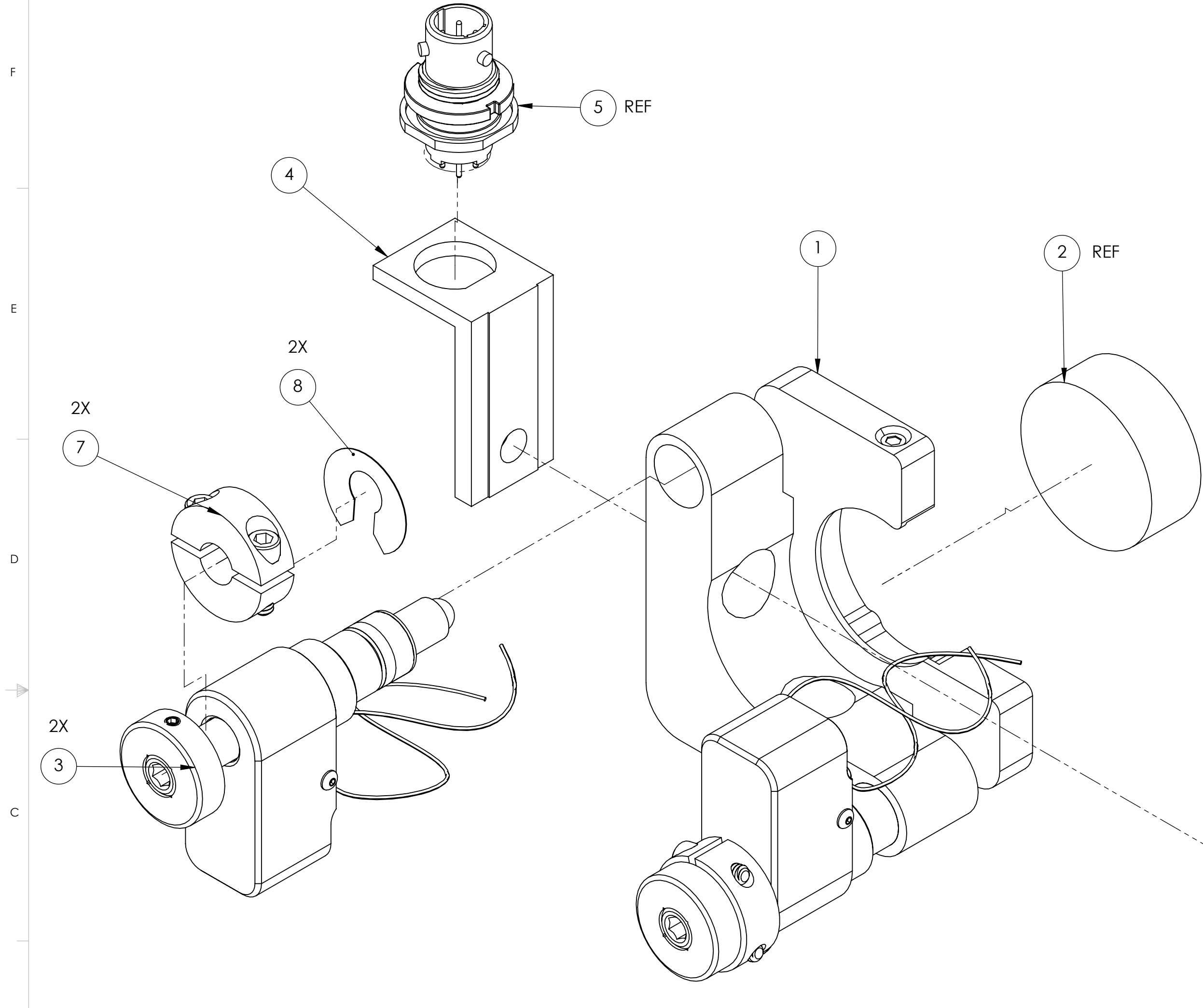
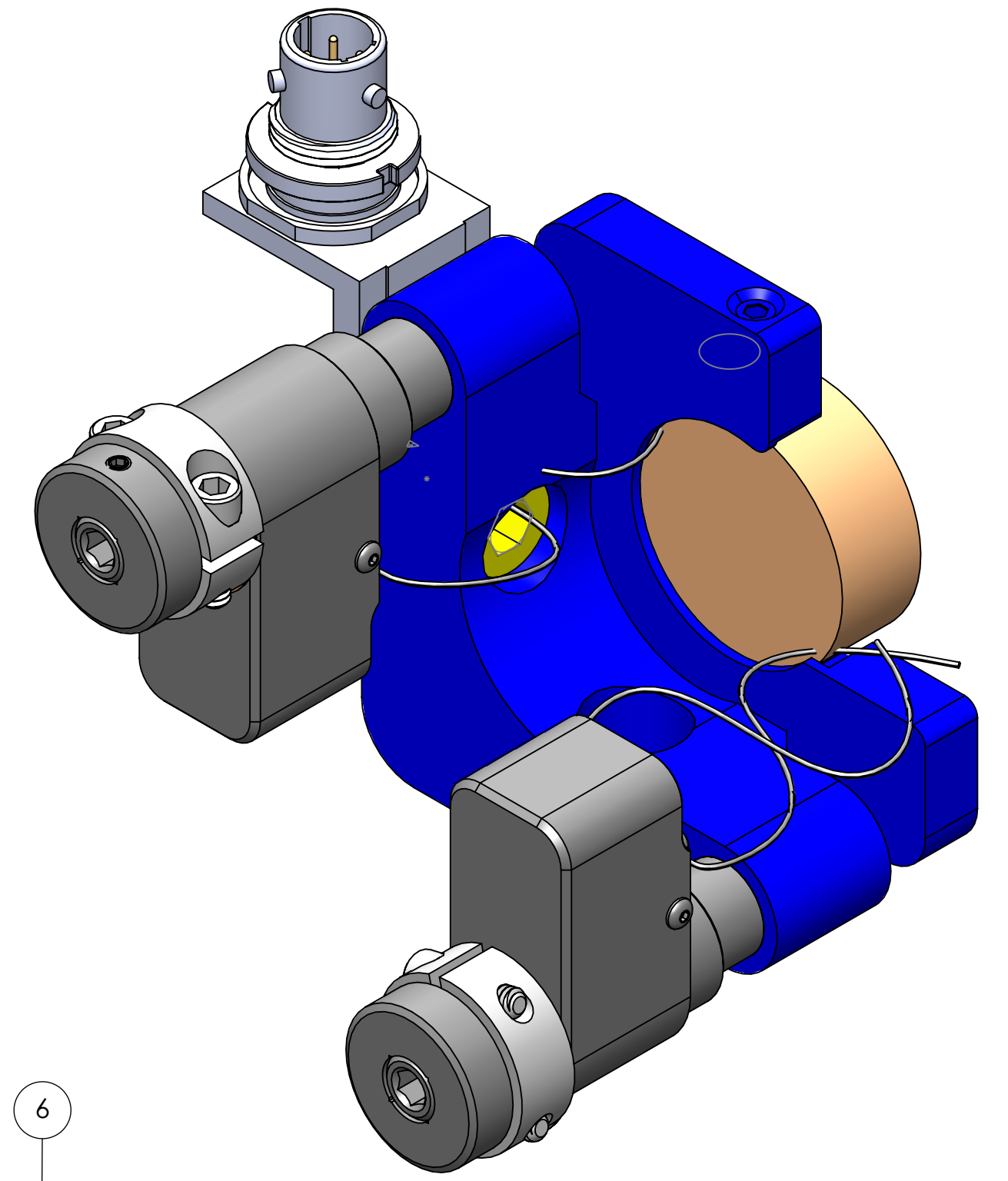


1. FOR PICOMOTOR MOUNT WIRING DETAILS, PLEASE REFER TO D1400279  
 2. FOR PICOMOTOR C&B PROCEDURE, PLEASE SEE E2100085

REV.	DATE	DCN #	DRAWING TREE #
v1	5 DEC 2024	E2400436-x0	-
-	-	-	-
-	-	-	-



**ISO EXPLODED VIEW**



**ISO PICO VIEW**

ITEM NO.	PART NUMBER	DESCRIPTION	MATERIAL	QTY.
8	D1400226	aLIGO, ISC, PM KAPTON WASHER, .63 OD X .25 ID	KAPTON	2
7	D1800220	aLIGO, Picomotor, Clamping Two-Piece Shaft Collar (Altered)	2024-T351 Al	2
6	92196A534 McMaster-Carr or EQ.	SHCS, 18-8 SST, 1/4"-20 X 0.313"	18-8 SSTL	1
5	SEE DESC.	SWPC_BNC_Glenair_803-003-07M6-4PN-598A	-	1
4	D1002763	ISC Panel Bracket for Glenair Coupling	6061-T6 Al	1
3	8301-UHV NEWPORT OR EQ.	NewFocus, PICO MOTOR	6061-T6 Al	2
2	TBD	1" OPTIC	-	1
1	D2400208	KINEMATIC MIRROR MOUNT, 1in OPTIC, RIGHT-HAND (IXM100.C2-VC LIGO)	-	1
PARTS LIST				

NOTES AND TOLERANCES: (UNLESS OTHERWISE SPECIFIED)

**LIGO** CALIFORNIA INSTITUTE OF TECHNOLOGY  
 MASSACHUSETTS INSTITUTE OF TECHNOLOGY

**PART NAME**  
 A+, SPI, "Follower" Main In -Vacuum Wall-Mounted Assembly (HAM3, HAM4), 1" Beam Height, Mirror Mount,RH(Actuated)

**MATERIAL**  
AS NOTED

**FINISH**  
N/A μinch

**SYSTEM**  
A+

**SUB-SYSTEM**  
SPI

**NEXT ASSY**  
D2400103

<b>DESIGNER</b>	E.SANCHEZ	21 MAY 2024	<b>SIZE</b>	<b>DWG. NO.</b>	<b>REV.</b>
<b>DRAFTER</b>	A.LOPEZ	5 DEC 2024	c	D2400145	v1
<b>CHECKER</b>	SEE DCC	SEE DCC			
<b>APPROVAL</b>	SEE DCC	SEE DCC			

**SCALE:** 1:1    **PROJECTION:**

SHEET 1 OF 1